

**Module 3: Une journée à l'école**  
**Topic 5 Content: Bâtiments importants et monuments Notes**

**Introduction**



*Bâtiments importants  
et monuments*

Click the pictures of the important buildings and landmarks to learn more about each.



*Bâtiments importants et monuments*

Click the pictures of the important buildings and landmarks to learn more about each.

**Module 3: Une journée à l'école**  
**Topic 5 Content: Bâtiments importants et monuments Notes**

**Eiffel Tower**



One of the most famous landmarks of France is the Eiffel Tower. It is located in Paris and was originally built for the World's Fair of 1889.

**Module 3: Une journée à l'école**  
**Topic 5 Content: Bâtiments importants et monuments Notes**

**Arc de Triomphe**



Built to commemorate Napoleon's victories, the *Arc de Triomphe* is located in Paris. This arch is located in the middle of *Place Charles de Gaulle*.

**Module 3: Une journée à l'école**  
**Topic 5 Content: Bâtiments importants et monuments Notes**

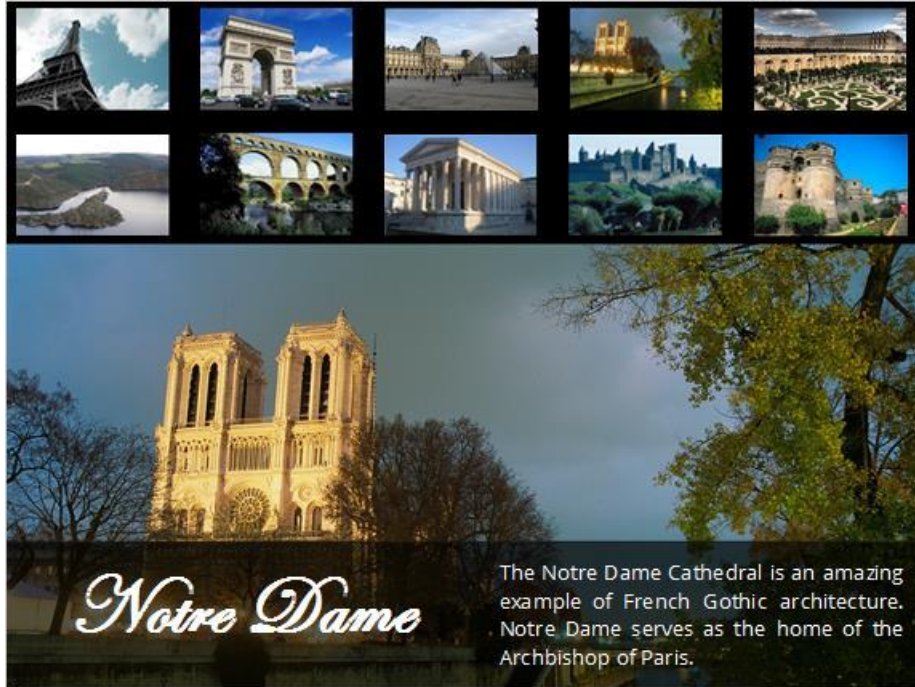
**Le Louvre**



*Le Louvre is a French palace, and the national art museum of France. The most famous piece of art in the museum is Leonardo da Vinci's *Mona Lisa*.*

**Module 3: Une journée à l'école**  
**Topic 5 Content: Bâtiments importants et monuments Notes**

**Notre Dame**

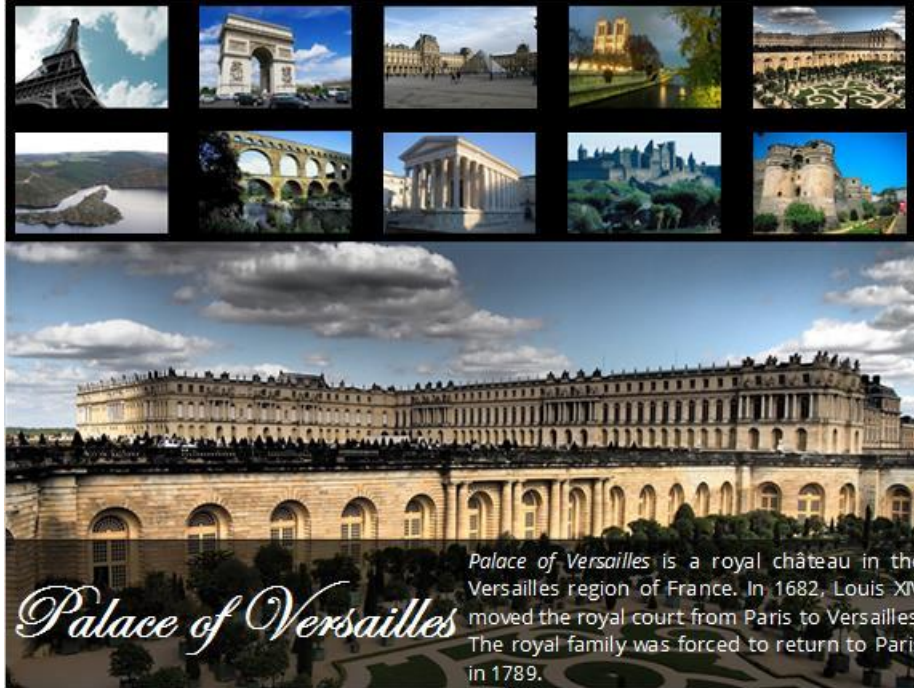


The Notre Dame Cathedral is an amazing example of French Gothic architecture. Notre Dame serves as the home of the Archbishop of Paris.

## Module 3: Une journée à l'école

### Topic 5 Content: Bâtiments importants et monuments Notes

#### Palace of Versailles



Palace of Versailles is a royal château in the Versailles region of France. In 1682, Louis XIV moved the royal court from Paris to Versailles. The royal family was forced to return to Paris in 1789.

**Module 3: Une journée à l'école**  
**Topic 5 Content: Bâtiments importants et monuments Notes**

**Loire River**



The Loire River is the largest river in France and empties into the Atlantic Ocean at *St. Nazaire*. Along its banks are many famous *chateaux* that you can visit.

## Module 3: Une journée à l'école

### Topic 5 Content: Bâtiments importants et monuments Notes

#### Pont du Gard



The South of France used to be part of the Roman Empire and you can find many Roman historical landmarks in the *Provence* region. One example is *Pont du Gard*, a roman aqueduct.



## Module 3: Une journée à l'école

### Topic 5 Content: Bâtiments importants et monuments Notes

#### Maison Carrée



*Maison Carrée* in Nîmes is one of the best preserved Roman temples still standing.

**Module 3: Une journée à l'école**  
**Topic 5 Content: Bâtiments importants et monuments Notes**

**Carcassonne**



The walled city of *Carcassonne* in the *Provence* region is another example of a Roman city. This city is still in operation today.

**Module 3: Une journée à l'école**  
**Topic 5 Content: Bâtiments importants et monuments Notes**

**Château Fort**



Before the opulence came, most cities in France had a *château fort* that was used to defend the area. If you visit almost any city in France, you might be able to visit its original *chateau fort*.