

Module 8: Personality
Topic 3 Content: Phrenology

Introduction

PHRENOLOGY



Franz Joseph Gall (1758-1828)

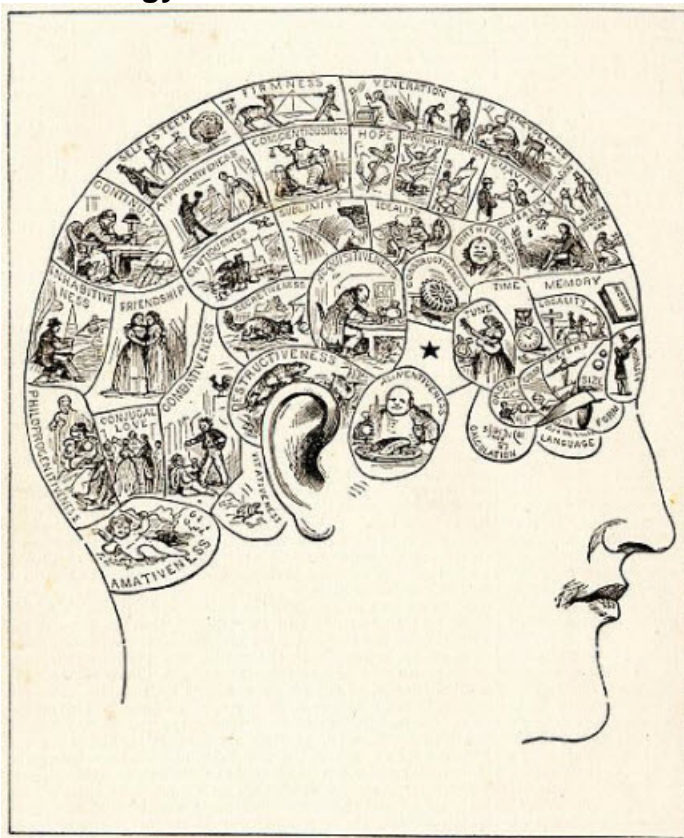
Click on some of the segmented regions of the skull to view which personality traits Franz Gall attributed to localized bumps on the human head. Keep in mind, phrenology is completely discredited by modern psychologists, and you are not required to memorize any of these traits. This activity only serves to illustrate some of the early approaches to personality assessments.

Click on some of the segmented regions of the skull to view which personality traits Franz Gall attributed to localized bumps on the human head. Keep in mind, phrenology is completely discredited by modern psychologists, and you are not required to memorize any of these traits. This activity only serves to illustrate some of the early approaches to personality assessments.

Module 8: Personality

Topic 3 Content: Phrenology

Phrenology Traits: Part I



Phrenological Chart of the Faculties.

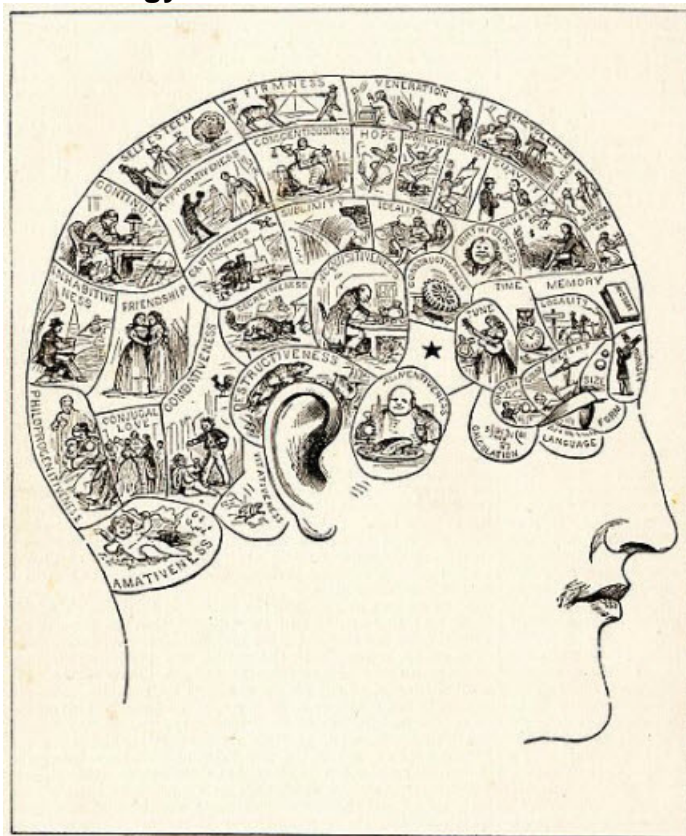
Click the regions in the image on the left.

- Amativeness:** disposition to love
- Philoprogenitiveness:** abundantly producing offspring
- Conjugal Love:** love between marriage partners
- Inhabitiveness:** living in or on
- Continuity:** state of being continuous
- Self Esteem:** favorable impression of oneself
- Friendship:** association as friends
- Approbativeness:** approving
- Cautiousness:** showing discretion
- Combativeness:** inclined to fight
- Vitativeness:** the love of life and fear of death
- Destructiveness:** causing ruin
- Secretiveness:** tending to keep your thoughts or activities unknown to others
- Alimentiveness:** the inclination of appetite for food
- Acquisitiveness:** tendency to gain ideas or information; desire to possess
- Sublimity:** strong spiritual, moral, or intellectual stature
- Conscientiousness:** principled
- Firmness:** determined or steadfast
- Veneration:** feelings of deep respect or reverence
- Hope:** to wish for a particular event; to consider possible
- Spirituality:** religious beliefs or pursuing a religious life
- Ideality:** the state or quality of being ideal; existence in idea only, not in reality

Module 8: Personality

Topic 3 Content: Phrenology

Phrenology Traits: Part II



Click the regions in the image on the left.

Imitation: something emulated or duplicated from an original, often in an inferior manner

Constructiveness: meant to improve; helpful

Benevolence: the desire to act kindly or charitably toward others

Suavity: courteous; gracious and sophisticated

Mirthfulness: joyous and merry

Causality: relationship between cause and effect

Human Nature: typical human characteristics, often thought of as less than perfect

Comparison: the act of comparing or being compared; having similar qualities

Time: a duration; intervals on a continuum

Tune: a melody or song

Memory: ability to retain or recall past information

Locality: a specific neighborhood or place; location

Individuality: being a distinct person from others

Size: dimensions, proportions, or extent of an object or person

Weight: measure of heaviness

Color: a general appearance of skin

Order: establishing a sequence, organization, or arrangement

Calculation: the act, process, or result of calculating; an estimation of likely outcomes

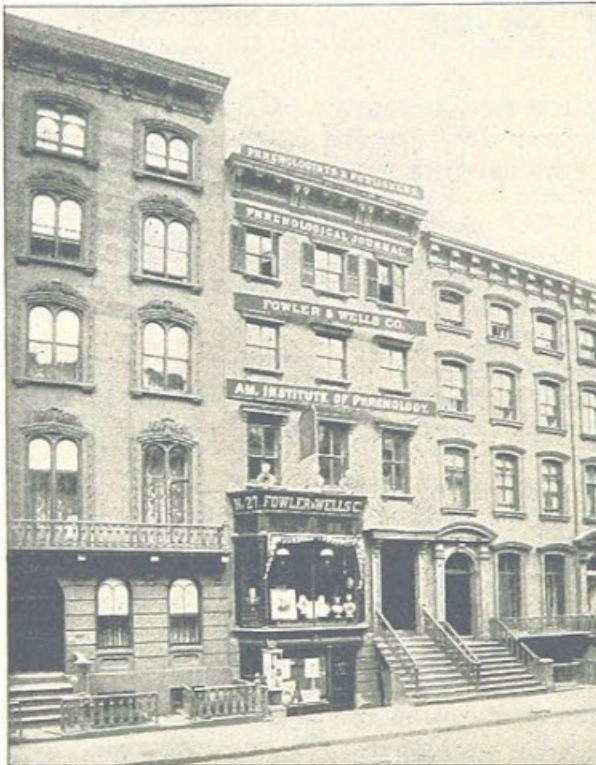
Language: communication of thoughts and feelings

Form: shape or structure

Module 8: Personality

Topic 3 Content: Phrenology

Summary



FOWLER & WELLS CO. AND AMERICAN INSTITUTE OF PHRENOLOGY,
27 EAST 21ST STREET, NEAR BROADWAY.

Although modern psychology has discredited Gall's theory of phrenology, people in the nineteenth century took it quite seriously. In fact, there were machines developed specifically to measure and analyze the skull.

American Institute of Phrenology
(New York, 1893)

Although modern psychology has discredited Gall's theory of phrenology, people in the nineteenth century took it quite seriously. In fact, there were machines developed specifically to measure and analyze the skull.