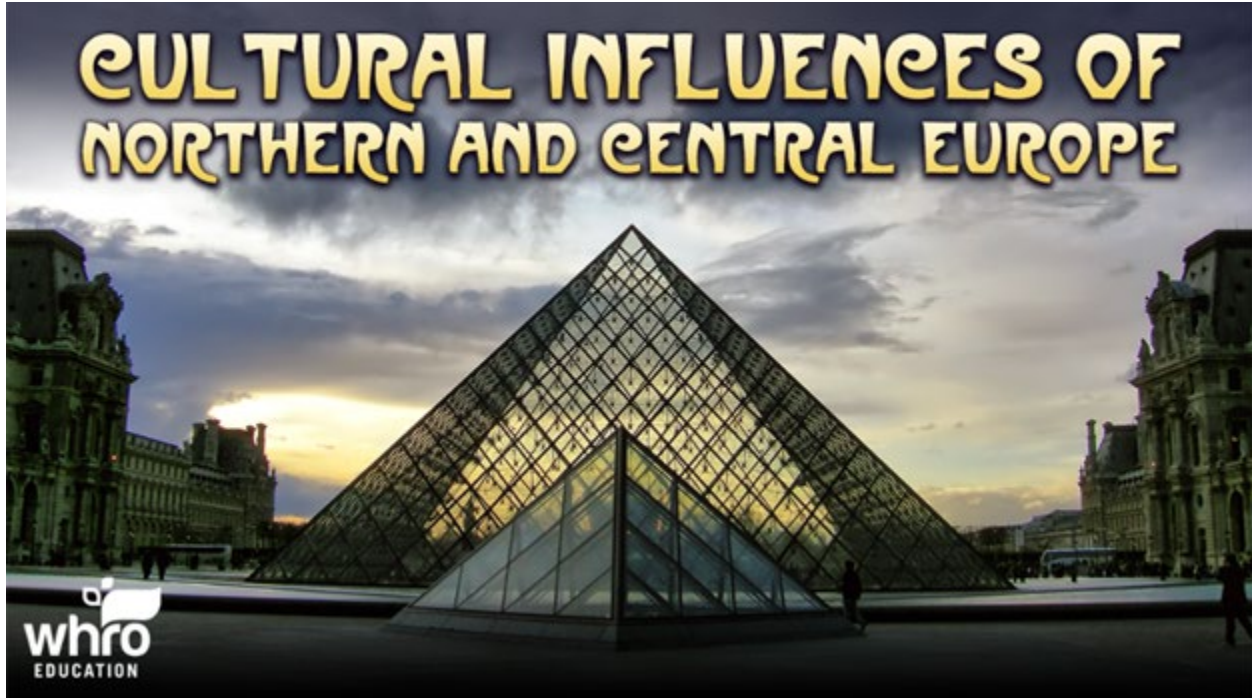


**Module: Europe**  
**Topic Content: Cultural Influences of Northern and Central Europe**

**Cultural Influences of Northern and Central Europe**



Click next to begin.

**Module: Europe**  
**Topic Content: Cultural Influences of Northern and Central Europe**

**Menu**



**Photos**



Click each photo to learn more.

**Module: Europe**  
**Topic Content: Cultural Influences of Northern and Central Europe**

**Big Ben**



Big Ben is one of the most recognizable landmarks in London. The name Big Ben actually refers to the large bell located inside the clock tower. The tower is officially named the Elizabeth Tower, and is part of the UK's House of Parliament.

**Module: Europe**  
**Topic Content: Cultural Influences of Northern and Central Europe**

**Tower of London**



The Tower of London is a historic castle located along Thames River. It was famously used as a prison from the year 1100 until 1952. Many prominent figures were imprisoned here, including Sir Walter Raleigh and Elizabeth I, before she was queen.

**Module: Europe**  
**Topic Content: Cultural Influences of Northern and Central Europe**

**Tower Bridge**



The Tower Bridge is an iconic symbol of the city of London. It crosses the Thames River near the Tower of London. The Tower Bridge has undergone several renovations since it was opened in 1894.

## Module: Europe

### Topic Content: Cultural Influences of Northern and Central Europe

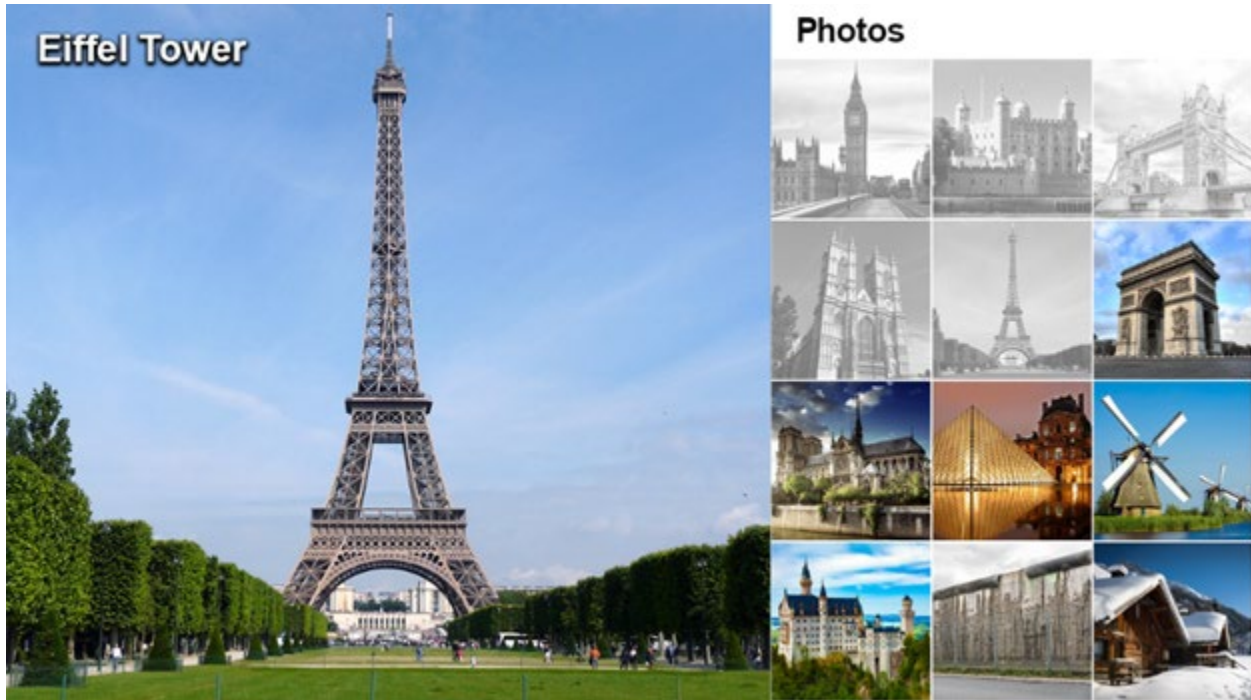
#### Westminster Abbey



Westminster Abbey is a large historic church located in London, England. It is more than 1,000 years old. Every English and British king and queen has been crowned at Westminster Abbey since William the Conqueror in 1066.

**Module: Europe**  
**Topic Content: Cultural Influences of Northern and Central Europe**

**Eiffel Tower**



The Eiffel Tower was built in 1889 for a world's fair in Paris. Many residents hated the tower initially; however, the structure has become one of the most beloved and recognizable symbols of France. The Eiffel Tower was the world's tallest man-made structure until 1930.

**Module: Europe**  
**Topic Content: Cultural Influences of Northern and Central Europe**

**Arc de Triomphe**



**Photos**



The Arc de Triomphe is a famous landmark in the city of Paris. The structure was built in 1836 to commemorate victories of the French Army under Napoleon Bonaparte. The Tomb of the Unknown Soldier was built under the Arc after the end of World War I.



## Module: Europe

### Topic Content: Cultural Influences of Northern and Central Europe

#### Notre Dame de Paris



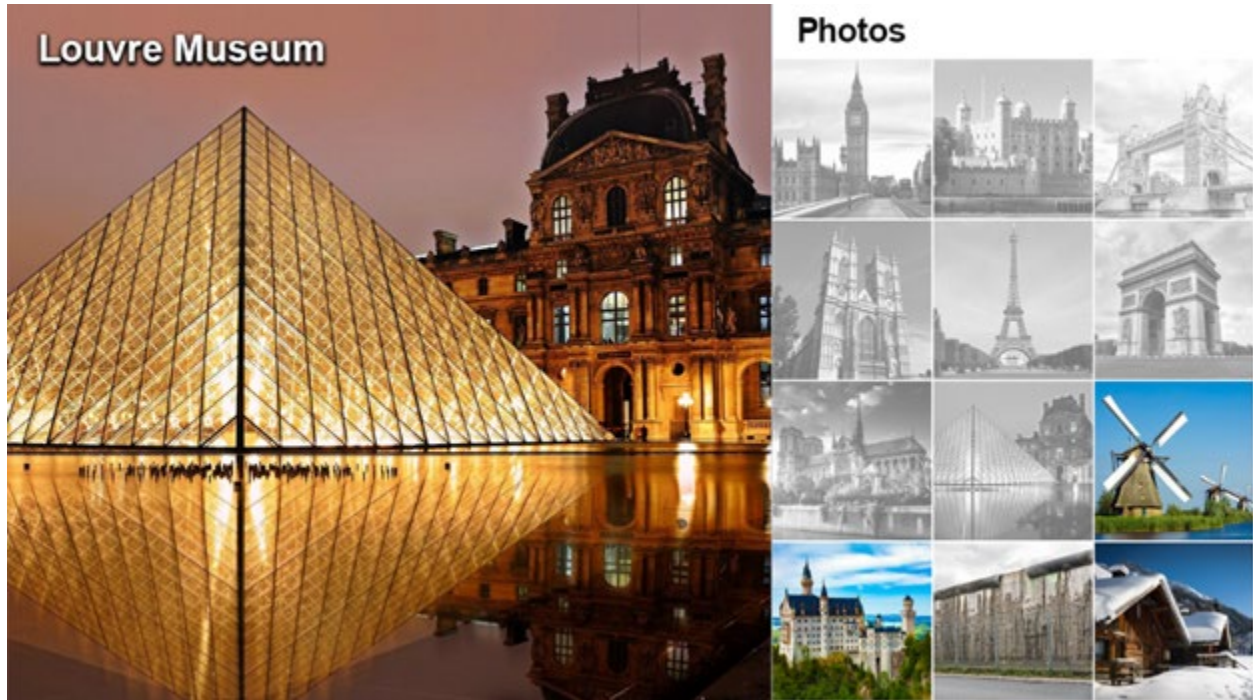
#### Photos



Notre Dame de Paris is a famous Roman Catholic cathedral located in the city of Paris. It is one of the first Gothic cathedrals ever built. Construction began in 1163, and took almost 200 years to complete. The structure caught fire in 2019 and was heavily damaged.

**Module: Europe**  
**Topic Content: Cultural Influences of Northern and Central Europe**

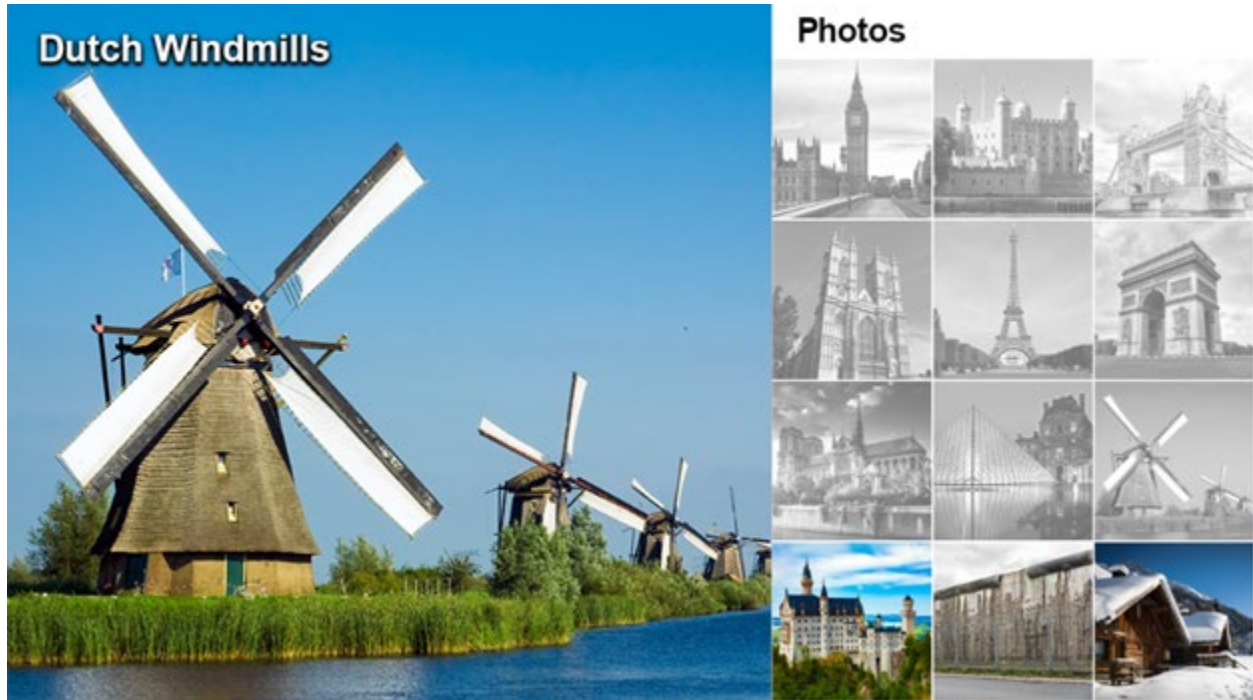
**Louvre Museum**



The Louvre is the largest art museum in the world. Located by the Seine River in Paris, the Louvre was previously used as a fortress and a royal palace. The museum houses countless famous art works, like the Mona Lisa by Leonardo da Vinci.

**Module: Europe**  
**Topic Content: Cultural Influences of Northern and Central Europe**

**Dutch Windmills**



These Dutch windmills were used to grind grain, saw wood, and pump water. The earliest polders in the Netherlands were drained using windmill-powered pumps. The Dutch now use advanced electrical pumps to reclaim land.

**Module: Europe**  
**Topic Content: Cultural Influences of Northern and Central Europe**

**Neuschwanstein Castle**



**Photos**



Neuschwanstein Castle is an ornate palace located in the Alps of Bavaria, Germany. Neuschwanstein, which translates to New Swan Stone, was built in 1869 by Crown Prince Ludwig, who was inspired by fairy tales and the writings of composer Richard Wagner.

**Module: Europe**  
**Topic Content: Cultural Influences of Northern and Central Europe**

**Berlin Wall**



This is a remaining piece of the Berlin Wall that divided the German city of Berlin from 1961 to 1989. Communist East Germany built this guarded concrete barrier to prevent people from escaping to the democratic west.

**Module: Europe**  
**Topic Content: Cultural Influences of Northern and Central Europe**

**Alpine Ski Resorts**



The Alps are a popular destination for international tourists and Europeans looking for recreation. Alpine ski resorts can be found in Austria, Switzerland, France, Germany, and Italy.